



RACO

TAYMAC

BELL

COMMERCIAL, INDUSTRIAL AND RESIDENTIAL ELECTRICAL PRODUCTS

RACO® Universal Exposed Work Covers

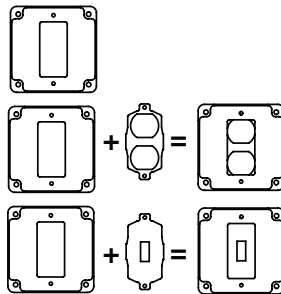
For use with 4" square box



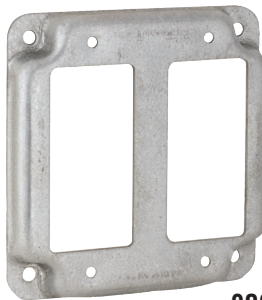
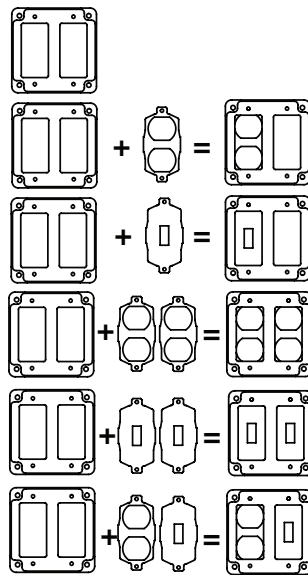
808U



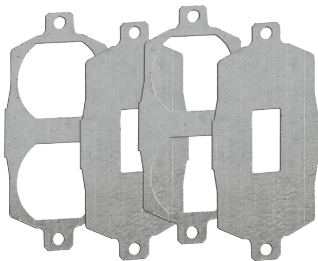
1-Device: 3 in 1 covers



2-Device: 6 in 1 covers



809U

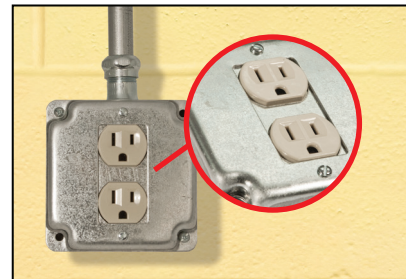


Application

Surface covers are used to support switches or receptacles in areas where the box is surface mounted or positioned in exposed work applications.

Product Features

- Duplex and Toggle Switch adapter plates provide flexibility during cover installation
- For GFCI, Duplex, or Toggle Switch
- Ideal for service trucks
- Carry less part numbers-reduce inventory dollars
- RACO exposed work covers include required hardware for mounting the device(s)
- RACO exposed work covers meet the requirements of the 2008 NEC Article 250.146(A).
- Cover, plates and hardware are packed in a poly-bag with printed catalog number, configurations and compliance.
- MADE in USA
- Inserts and covers are made of zinc galvanized coated steel.



Listed
Covers for Outlet
Boxes 731A
US Patents
6,642,453;
7,348,480;
2,345,238;
7,176,379;
6,872,887

RACO® Universal Exposed Work Covers - Raised 1/2"

Catalog Number	Description	Cu. In	Std. Pkg.	UPC-A Bar Code	I 2 of 5
808U	3 in 1 Universal Exposed Work Cover: GFCI, Duplex, or Toggle	6.5	10	050169978085	50050169978080
809U	6 in 1 Universal Exposed Work Cover: GFCI, Duplex, or Toggle	6.5	10	050169978092	50550169978097



RECEIVE A FREE SAMPLE OF THIS PRODUCT!

PLEASE FILL OUT ALL INFORMATION (Please Print)

SHIP TO NAME: _____

NAME OF COMPANY: _____

STREET ADDRESS: _____

STATE, ZIP CODE: _____

PHONE NUMBER: _____

WHAT DOES YOUR COMPANY DO?: _____

Part No.'s *(Please Select One)*

808U

809U

EMAIL A COPY OF THIS FORM TO: rtbsamples@hubbell.com

